

Rufford Park Post



AIREBOROUGH LEARNING PARTNERSHIP TRUST

Issue 12 3rd December 2021

www.ruffordparkprimary.org.uk

office@ruffordparkprimary.org.uk

Telephone: 0113 3910906

Headteacher's news:

It's beginning to look a lot like Christmas...



School has certainly started to feel very 'Christmassy' this week following the Fayre on Saturday and the snow we had on Sunday.

In school, the children have upped their hours in the hall as they have been practising their performances - the EYFS and KS1 shows take place next week and KS2 is in the final week. We are looking forward to sharing these with a reduced live audience and thank you for your understanding regarding the ticket allocation limits we have imposed. When you visit school to watch the shows, we request that you take a Lateral Flow Test in the morning before you attend and that you wear a mask for the duration of the performance (unless exempt).

The Omicron variant and new government rules has led to some changes in the way in which we are operating in school. Face coverings must now be worn by all visitors and the staff are wearing them in busy communal areas. The [whole school risk assessment](#) has been updated to reflect these changes.

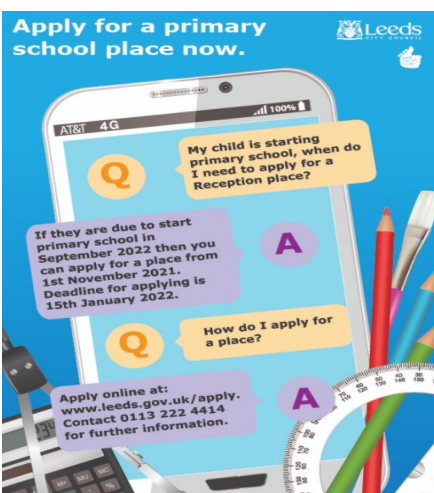
Have a lovely weekend.

On Saturday the FORP Christmas Fayre raised an amazing £2790. Thank you to all the volunteers on the day - it was lovely to see so many parents, children and staff helping out and enjoying themselves.

A big thank you to Claire and Rhiannon who, once again, worked tirelessly to ensure the event was a big success. And of course ... thank you to everyone who attended on the day.



The deadline to apply for a September Reception 2022 primary school place is fast approaching. If you have a child who is due to start school in September, please apply. Please also pass on this message to any friends or family.



In assembly... the weekly assemblies, as delivered by myself and Miss Tidey, have changed to virtual for this week and next. This is so that we can increase hall time for teachers to practise the Christmas shows. In my recorded assembly this week, I spoke to the children about advent and the importance of being patient and waiting.

Some more signposting

The Educational Visits UK

[Days Out Yorkshire - Winter Magazine](#)

is a seasonal digital magazine promoting what is happening regionally in museums and at attractions. There is a section about what is happening in the school holidays for parents. The objective is to keep everyone safe and informed of what's on over the winter period as well as helping the tourism industry recover after what has been a difficult two years.



DATES FOR YOUR DIARY

Mon 6 Dec 7:00pm: Tree of Lights event at Yeadon Town Hall

Sat 11 Dec 13:00: Cross-country at GSAL

Christmas performance dates/times:

EYFS: Wed 8 Dec 9:30am

KS1: Wed 8 Dec 2:00pm & Thurs 9 Dec 9:30am

KS2: Tues 14 Dec 9:30am & 1:50pm
(Y3 Willow, Y4 Beech & Y5s from Ash)
Wed 15 Dec 9:30am & 1:50pm
(Y3/4 Cedar and Y5 Oak)

Fri 17 Dec: School closes for Christmas

Tues 4 Jan: School opens for Spring 1

Click below to see what has been happening in your child's class this week:

[Nursery](#)

[Reception](#)

[Y1 Pear](#)

[Y1/2 Lime](#)

[Y2 Cherry](#)

[Y3 Willow](#)

[Y3/4 Cedar](#)

[Y4 Beech](#)

[Y5 Oak](#)

[Y5/6 Ash](#)

[Y6 Maple](#)